

SII ●
Seiko Instruments

Smart Label Printer

Models 220 and 120

User Guide

for Windows® 95, 98 and Windows® NT 4.0

SEIKO INSTRUMENTS USA INC. SOFTWARE LICENSE AGREEMENT

IMPORTANT! The enclosed software is licensed only on the condition that the licensee (referred to in this Agreement as "YOU") agrees with Seiko Instruments USA Inc. (referred to in this Agreement as "SIU") to the terms and conditions set forth in the following legal agreement. READ THIS SOFTWARE LICENSE AGREEMENT CAREFULLY. YOU WILL BE BOUND BY THE TERMS OF THIS AGREEMENT IF YOU OPEN THE SEALED PACKAGE. If You do not agree to the terms contained in this Software License Agreement, please return this package UNOPENED to your dealer and your license fee will be refunded.

SIU will grant You a nontransferable, nonexclusive license to use the enclosed software (the "Licensed Software") and the accompanying documentation (the Licensed Software, the media embodying the Licensed Software, and the documentation are referred to in this Agreement as the "Licensed Materials"), if You agree to the following terms and conditions:

1. TERM; TERMINATION

This Agreement is effective from the date on which You open the package containing the Licensed Materials. This Agreement may be terminated by You at any time by destroying the Licensed Materials, together with all copies. It will also terminate automatically without notice if You fail to comply with any term or condition of this Agreement.

2. LICENSE GRANT

SIU grants to You the right to use the Licensed Software in conjunction with a single Smart Label Printer (hereinafter "Printer") as noted herein. YOU MAY NOT USE, COPY, MODIFY, OR TRANSFER THE LICENSED MATERIALS, IN WHOLE OR IN PART, EXCEPT AS PROVIDED IN THIS AGREEMENT.

3. OWNERSHIP

The Licensed Materials are the sole and exclusive property of SIU.

4. COPY RESTRICTIONS

You may make one (1) copy of the Licensed Software for backup purposes. In no event does the copying permitted under this Agreement include the right to decompile, disassemble, or electronically transfer the Licensed Software, or to translate the Licensed Software into another computer language. You may not copy the documentation.

You agree to include the copyright notice set forth on the label of the media and embodied in the Licensed Software on any copy of the Licensed Software in any form, in whole or in part.

5. PROTECTION AND SECURITY

You agree to use your best efforts and take all reasonable steps to safeguard the Licensed Materials to ensure that no unauthorized person shall have access thereto and that no unauthorized copy, publication, disclosure or distribution, in whole or in part, in any form shall be made. You acknowledge that the Licensed materials contain valuable, confidential information and trade secrets and that unauthorized use and/or copying are harmful to SIU.

6. DUTY TO BACKUP DATA

IT IS YOUR RESPONSIBILITY TO MAINTAIN PERIODIC BACKUP COPIES OF ALL DATA AND PROGRAMS USED IN CONJUNCTION WITH THE LICENSED SOFTWARE TO PREVENT CATASTROPHIC LOSS.

7. LIMITED WARRANTY

The only warranty SIU makes to You in connection with the Licensed Materials is that the media on which the Licensed Software is recorded will be replaced without charge, if SIU in good faith determines that it was defective and not subject to misuse, and if the media and proof of purchase of the Printer are returned to SIU or the dealer from whom it was obtained within ninety (90) days of the date of purchase. Because SIU cannot know the purposes for which You acquired the Printer or the uses to which You will put the Printer or the Licensed Software, You assume full responsibility for the selection of the Printer and Licensed Software and for their installation and use and the results of that use.

8. WARRANTY DISCLAIMERS; LIABILITY LIMITATIONS

SIU MAKES NO WARRANTY OR REPRESENTATION WITH RESPECT TO THE LICENSED SOFTWARE AND IT IS LICENSED "AS IS." THE WARRANTY AND REMEDY PROVIDED ABOVE ARE EXCLUSIVE AND IN LIEU OF ALL OTHER WARRANTIES, EXPRESS OR IMPLIED, INCLUDING, BUT NOT LIMITED TO, THE IMPLIED WARRANTIES OF MERCHANTABILITY AND FITNESS FOR A PARTICULAR PURPOSE, AND ANY STATEMENTS OR REPRESENTATIONS MADE BY ANY OTHER PERSON OR FIRM ARE VOID. YOU AGREE NOT TO USE THE LICENSED SOFTWARE IN ANY SITUATION WHERE SIGNIFICANT DAMAGE OR INJURY TO PERSONS, PROPERTY OR BUSINESS COULD OCCUR FROM A SOFTWARE ERROR.

YOU ASSUME ALL RISK AS TO THE SELECTION, USE, PERFORMANCE AND QUALITY OF THE LICENSED MATERIALS. IN NO EVENT WILL SIU OR ANY OTHER PARTY WHO HAS BEEN INVOLVED IN THE CREATION, PRODUCTION OR DELIVERY OF THE LICENSED MATERIALS BE LIABLE FOR SPECIAL, DIRECT, INDIRECT, INCIDENTAL OR CONSEQUENTIAL DAMAGES, INCLUDING LOSS OF PROFITS OR INABILITY TO USE THE LICENSED MATERIALS, EVEN IF SIU OR SUCH OTHER PARTY HAS BEEN ADVISED OF THE POSSIBILITY OF SUCH DAMAGES IN NO EVENT SHALL SIU' S OR SUCH OTHER PARTY' S LIABILITY FOR ANY DAMAGES OR LOSS TO YOU OR ANY OTHER PARTY EXCEED THE PURCHASE PRICE PAID FOR THE PRINTER CONTAINING THESE LICENSED MATERIALS.

Some states and/or countries do not allow limitations on how long an implied warranty lasts and some states and/or countries do not allow the exclusion or limitation of incidental or consequential damages, so the above limitation and exclusion may not apply to you. This warranty gives you specific legal rights, and you may also have other rights which vary from state to state and/or country to country.

9. GENERAL

If any provision or portion of a provision of this Agreement is determined to be invalid or unenforceable, it shall be deemed omitted and the remaining provisions of this Agreement shall remain in full force and effect.

This Agreement is governed by and construed in accordance with the laws of the State of California. Any suit brought with respect to this Agreement may be brought ONLY in Santa Clara County, California USA and must be filed no later than one (1) year after the purchase date of the Printer or subsequent software upgrade.

This Agreement constitutes the entire agreement between the parties with respect to the subject matter hereof, and all prior agreements, representations, statements and undertakings are hereby expressly canceled.

Should you have any questions regarding this Agreement, you may contact SIU by certified mail at the most convenient address listed inside the back cover of the Licensed Software user' s guide.

10. U.S. GOVERNMENT RESTRICTED RIGHTS

The Licensed Materials are provided with RESTRICTED RIGHTS. The use, duplication, or disclosure by the Government is subject to restrictions as set forth in subdivision (c)(1)(ii) of The Rights in Technical Data and Computer Software clause at 52.227-7013. The contractor/ manufacturer of this Software is SEIKO INSTRUMENTS USA INC., 1130 Ringwood Court, San Jose, California 95131 USA.

FCC Compliance Statement

This equipment has been tested and found to comply with the limits for a Class B digital device, pursuant to Part 15 of the FCC rules. These limits are designed to provide reasonable protection against harmful interference in a residential application. This equipment generates, uses and can radiate radio frequency energy and, if not installed and used in accordance with the instructions, may cause harmful interference to radio communications. However, there is no guarantee that interference will not occur in a particular installation. If this equipment does cause harmful interference to radio or television reception, which can be determined by turning the equipment off and on, the user is encouraged to try to correct the interference by one or more of the following measures:

- Reorient or relocate the receiving antenna.
- Increase the separation between the equipment and receiver.
- Connect the equipment into an outlet on a circuit different from that to which the receiver is connected.
- Consult the dealer or an experienced radio/TV technician for help.

Changes or modifications not expressly approved by Seiko Instruments could void the user's authority to operate the equipment.

Applicable EC Directives and Standards

Directive	Title
89/336/EEC	EC Electromagnetic Compatibility Directive
73/28/EEC	EC Low Voltage Directive
Standards	Title
EMC	EN55022 classB /95 EN50082-1/92, IEC801-2/84, IEC801-3/84, IEC801-4/88
LVD	EN60950/87

Copyright

All rights reserved. No parts of this publication may be reproduced, stored in a retrieval system, or transmitted, in any form, or by any means, electronic, mechanical, photocopying, recording, or otherwise without the prior written permission of Seiko Instruments USA Inc. No patent liability is assumed with respect to the use of information contained herein. While every precaution has been taken in the preparation of this publication, Seiko Instruments USA Inc. assumes no responsibility for errors or omissions. Nor is any liability assumed for damages resulting from the use of information contained herein. Further, this publication and features described herein are subject to change without notice.

Copyright • 1989-1999 by Seiko Instruments USA Inc.
1130 Ringwood Court, San Jose, CA 95131. All rights reserved.

Smart Label Printer • 1992-1999 Print Things. All rights reserved.

Smart Label Printer 120/220 User Guide by Prestige Publications, Milpitas, CA

Trademark Information

IBM is a registered trademark of International Business Machines Corporation.

Microsoft and Windows are registered trademarks of Microsoft Corporation.

SII and the SII logo are registered trademarks of Seiko Instruments Inc.

Smart Label Printer is a registered trademark and SmartLabels, Smart Label Icons, SmartCopy, SmartCapture and SmartCode are trademarks of Seiko Instruments USA Inc.

Other products mentioned in this guide are trademarks or registered trademarks of their respective companies.

Important Safety Instructions

The following symbols are used in this User Guide.



WARNING. Warning statements are used to indicate actions that may result in risk of severe personal injury or loss of life.



CAUTION. Caution statements are used to indicate actions that may result in damage to the printer or other property, or may result in risk of minor personal injury.

Warning

- 1 Use only the AC adapter provided with this printer, or an AC adapter that has been approved by Seiko Instruments for use with this printer. Use of an incorrect AC adapter may cause risk of overheating or fire.
- 2 Do not bend or place a heavy object on the power cord as it could damage the cord and result in risk of electric shock or fire. Do not use the power cord if damaged or frayed.
- 3 The thermal print head may become quite hot after printing. Be careful when changing labels and cleaning the thermal head.

Caution

- 1 Never insert objects of any kind into this printer as they may touch dangerous voltage points or short out parts, and may result in a risk of fire or electric shock. Never spill liquid of any kind on the printer.
- 2 This printer contains no user-serviceable parts. Do not attempt to service the printer yourself as this can expose you to dangerous voltage points or other risks. Repair service should be performed by a trained technician.
- 3 Do not use this printer near water or in extreme humidity.

- 4 Be sure to hold only the connector end of the power cord or interface cable when disconnecting. Repeated pulling on the cable could damage the cable.
- 5 If any of the following conditions occur, turn off the printer and unplug the power cord from the power outlet:
 - The power cord is damaged or frayed.
 - Liquid has been spilled into the printer or the printer has been exposed to rain or water.
 - The printer does not recover from an error or the printer does not operate normally when the operating instructions are followed.
 - The printer exhibits a distinct change in performance, such as emitting a strange noise, odor or smoke.

Installation

For best performance, we recommend that you install your printer on a flat surface in a location that satisfies the following environmental conditions:

- Not subject to vibration
- Not exposed to direct sunlight
- Dust-free
- Condensation-free
- Temperatures: 59 to 95°F (15 to 35°C)
- Humidity: 30% RH to 80% RH (non-condensing)

About This Guide

As you'll soon realize, the Smart Label Printer® is easy to set up and use. Chances are, once you've read what you need to know in order to get going, you won't have to use this guide except as a quick reminder or a reference.

This guide will help you set up your SLP 120 or 220, install the software, and use your SLP to make labels.

In writing this guide we assume that you are familiar with common operations using Microsoft® Windows® 95, 98 or Windows NT on an IBM®-compatible PC.

The following conventions are used to convey information in this guide:

- Commands you choose from the menus and items you select appear in italics with initial capital letters.

Example: Choose *Print* from the File menu.

- Text we ask you to type appears in bold.

Example: Type **A:SETUP**.

This guide has three chapters and three appendices:

- Chapter 1, *Introduction*, provides some general information about the SLP 120/220 and the Smart Label program.
- Chapter 2, *Getting Started*, provides instructions for connecting the SLP 120/220 to an IBM-compatible PC, loading labels into the printer, and installing the Smart Label program. It also describes the toolbar functions, how to prepare and print labels, and how to use on-line help.
- Chapter 3, *Changing Labels and Printer Care*, provides information for replacing a label roll and taking care of your SLP.
- Appendix A, *Specifications*, provides SLP 120/220 specifications and the connector pin assignments.
- Appendix B, *Commonly Asked Questions and Answers*, provides a list of questions and answers that can help you resolve problems.
- Appendix C, *Technical Support and Service*, describes how to determine if your SLP needs service and how to contact Seiko Instruments for Technical Support and repairs.
- Appendix D, *Ordering Labels and Parts*, provides information for ordering SmartLabels and replacement parts and accessories.

Contents

Chapter 1 Introduction

- About Your Smart Label Printer 1-2
- Software Features 1-3

Chapter 2 Getting Started

- What You Need 2-2
- A Word About Labels 2-3
 - Caring for Labels 2-3
- Installing the SLP 120 or 220 2-4
 - Unpacking the SLP 2-4
 - Connecting the SLP to a Power Outlet 2-5
 - Connecting the SLP to an IBM-compatible PC 2-6
 - Loading a Roll of Labels 2-7
 - Testing the Printer 2-9
- Installing the Smart Label Program 2-10
- Starting the Program 2-11
 - Updating a Previous Version 2-11
- Changing the COM Port 2-12
- Using the Toolbar 2-13
 - Basic Function Buttons 2-13
 - Smart Label Icons 2-14
 - Object Buttons 2-14
 - Contact Information Button 2-15
- Creating New Address Labels 2-16
 - Step 1 Create a New Label 2-16
 - Step 2 Print the Label 2-16
 - Step 3 Save the Label 2-16
- Printing Saved Labels 2-17
- Preparing Other Labels 2-17
 - Using Smart Label Icons 2-18
 - Modifying the Objects 2-18
 - Adding Objects 2-19
 - Changing the Label Type 2-20
 - Saving the Format 2-20

Using On-Line Help 2-21
 Contents Tab 2-21
 Index Tab 2-22
 Find Tab 2-22

Chapter 3 Changing Labels and Printer Care

Overview 3-2
 Caring for Your Printer 3-2
 Off Line and On Line Mode 3-2
 Changing a Label Roll 3-3
 Removing the Old Roll 3-3
 Loading the New Roll 3-3
 Adjusting the Position of Labels 3-4
 Removing Stuck Labels 3-5

Appendix A Specifications

Smart Label Printer 120/220 Specifications A-2
 Status Light Indicators A-3
 IBM-compatible Connector Pin Assignments A-4

Appendix B Commonly Asked Questions and Answers B-1

Appendix C Technical Support and Service

Before You Call C-2
 Service for Your Smart Products C-3
 How to get your Smart Label Printer repaired C-3
 Returning your Smart Label Printer for repair is as easy
 as 1-2-3! C-3
 Smart Label Printer Repair Center Locations in North
 America and Europe C-4

Appendix D Ordering Labels and Parts

SmartLabels for Smart Label Printers D-2
 Replacement Parts and Accessories D-3

Index

Chapter 1

Introduction

About Your Smart Label Printer 1-2

Software Features 1-3

About Your Smart Label Printer

The Smart Label Printer® from Seiko Instruments replaces the typewriter for many daily tasks. These compact printers with their integrated Smart Label software print high-quality, personalized labels—eliminating the need for handwritten or typewritten envelopes and ending the hassle of using your regular printer to print labels for envelopes, file folders, bar codes, ID badges and more.

The SLP is the best way of printing one-at-a-time labels instantly without the setup hassle and wasted labels experienced when making labels with a regular printer. Direct thermal printing technology does not use ink, toner or ribbon, just labels. The SLP produces fast, laser-quality output on a variety of label sizes with the ability to print text, photo-like graphics, POSTNET codes and bar codes.

The Smart Label software features a WYSIWYG editor, SmartCapture™ and SmartCopy™ to capture text and addresses right off your screen, built-in database, a Windows print driver, and background printing. It uses TrueType fonts and imports logos, graphics, and text files.

With the wide variety of available SmartLabels™, you can use your SLP to create labels for just about anything. Here are some examples:

- Envelope labels
- File folder labels
- Name tags
- Shipping labels
- Storage container labels
- Notebook labels
- Bar code labels
- Diskette labels
- Rotary file cards
- Videocassette labels
- Binder labels
- Shelf labels

...and much more.

Software Features

The Smart Label program provides a rich set of features to simplify your labeling needs.

- 32-bit architecture designed to work in Windows 95, 98 and Windows NT with support for long file names.
- WYSIWYG editor displays labels as they will print.
- Prints in background so you can work with other applications while labels are printing. Print labels one at a time or whole mailing lists.
- Object-oriented user interface makes it easy to include text, pictures, bar codes, etc. on your label.
- Mixed text possible within each text object—different font types, sizes and styles (bold/italic/underline) can be included on a single line.
- Shrink-to-fit and word wrap ensure that addresses and other text fit on the label.
- SmartCapture and SmartCopy capture text from Windows applications, saving time and eliminating retyping.
- Customizable Smart Label Icons™ make it easy to format different types of labels.
- Built-in database to save labels and formats in user-definable database categories.
- Find feature makes it easy to locate saved labels by label name, database field, whole words or sounds-like word if you aren't sure of the spelling.
- Multiple user feature allows each user to have a unique setup and Smart Label start-up icon.
- Contact-based records updated automatically from label addresses.

Chapter 2

Getting Started

What You Need 2-2

A Word About Labels 2-3

Installing the SLP 120 or 220 2-4

Installing the Smart Label Program 2-10

Starting the Program 2-11

Changing the COM Port 2-12

Using the Toolbar 2-13

Creating New Address Labels 2-16

Printing Saved labels 2-17

Preparing Other Labels 2-17

Using On-Line Help 2-21

What You Need

In order to use your SLP and software, you need to have the following:

- An IBM PC or 100% compatible computer
- An 80386 or higher processor
- 4 MB of available Random Access Memory (RAM)
- An available RS-232C serial port
- 5 MB available hard disk space
- VGA or higher resolution graphics card
- A mouse or other pointing device
- Microsoft Windows 95, 98 or Windows NT 4.0

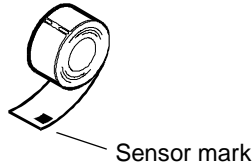
A Word About Labels

For best results we recommend the use of Seiko Instruments SmartLabels. Other brands may not be engineered to provide optimum, trouble-free results with your SLP; they may not work with your printer or they may damage it and void your warranty. Be sure to look for the following Seiko Instruments SmartLabels logo on the package when you buy labels.



SmartLabels are available in a wide variety of sizes and colors to properly label almost anything.

The SmartLabels have a sensor mark on the backing of each label that the SLP 120/220 uses for top of label alignment. Check to be sure the labels have this mark before loading them into the SLP.



Note... Older SmartLabels did not have this sensor mark. Be sure that the SLP 120 and 220 are listed as supported printers on the SmartLabels package.

Caring for Labels

The labels are sensitive to heat, moisture, and light. With this in mind:

- Store labels in a cool, dry place.
- Do not scratch or rub labels with a hard object.
- Keep organic solvents away from labels.

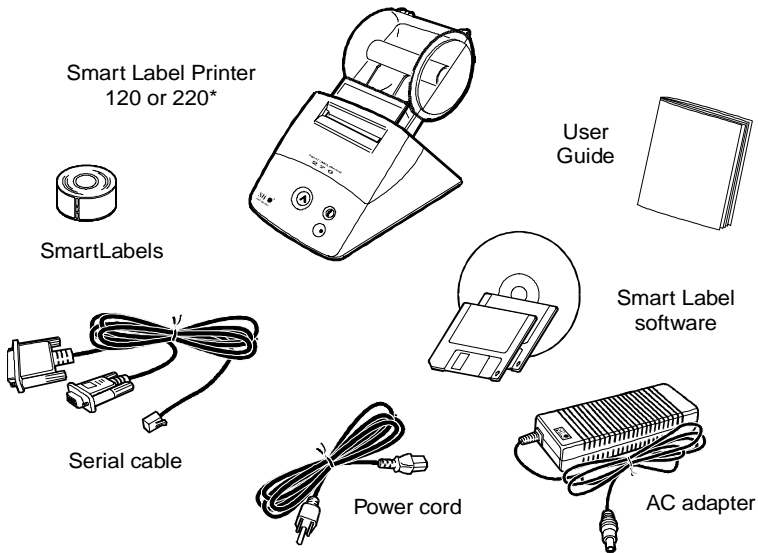
Installing the SLP 120 or 220

Here, you'll find out how to unpack and set up your new SLP. As part of the setup process, you'll load a roll of standard address labels and run a quick test.

Unpacking the SLP

Carefully remove the printer and its components from the box. It's a good idea to save the box and packing materials in case you need to store or ship the printer. Make sure you have all of the following items.

- A Smart Label Printer 120 or 220
- Smart Label software
- A serial cable to connect the SLP to your IBM-compatible computer
- A power cord
- An AC adapter
- A roll of SmartLabels
- User Guide



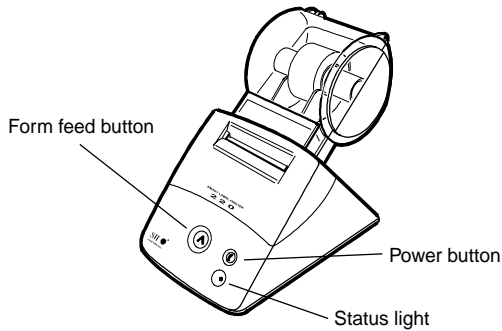
*Smart Label Printer 220 shown.

Connecting the SLP to a Power Outlet

Now you're ready to connect the SLP to a power outlet:

- 1 Plug the power cord into the AC adapter.
- 2 Plug the AC adapter cable into the jack at the rear of the SLP.
- 3 Plug the power cord into a power outlet.
- 4 Turn the SLP on by pressing the power button.

When you turn the printer on, the status light flashes green. This is just to let you know there are no labels in the printer.



Connecting the SLP to an IBM-compatible PC

Use the serial cable provided with the SLP 120/220 to connect the SLP to your computer. It has a telephone-style connector at one end and two computer connectors at the other end.



CAUTION: Connecting or disconnecting the interface cable while the printer is turned on may damage the printer.

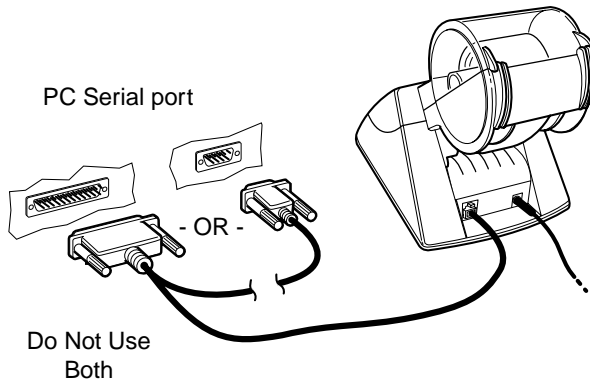
Follow these steps:

- 1 Make sure that the SLP is turned off.

When the power is on, the status light on the front of the printer is lit.

- 2 Plug the telephone-style connector into the jack on the rear panel of the SLP.
- 3 Plug the other end of the cable — either the 9- or 25-pin connector as appropriate — into a serial port on your computer.

Note... Serial ports are also called COM ports — COM1, COM2, COM3, or COM4. If your COM ports are all in use, purchase either another serial port or an “A-B” switch box to connect the SLP and another device to the same port. The Seiko Instruments’ serial-to-parallel converter can be used if you have an available parallel port (see Appendix D, Ordering Labels and Parts for ordering information).



Loading a Roll of Labels

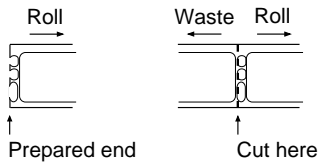
Follow the instructions below to load a roll of standard address labels. Instructions on loading other label types appear in Chapter 3.

Prepare the roll of labels

- 1 Remove the sticker from the beginning of the roll of labels.

Note... Check to be sure there is a black sensor mark on the label backing as illustrated on page 2-3.

- 2 If needed, cut between the labels to create a “leader.”



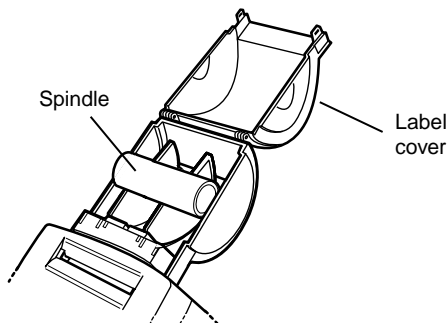
If the end of the roll is not prepared as shown above, cut between the labels leaving as much backing as possible on the end of the roll to act as a leader.

Load the roll of labels

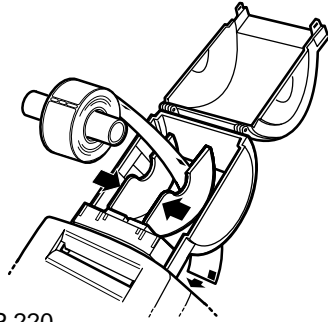
- 1 Make sure the power cord is connected and the printer is turned on.

The green status light should be flashing.

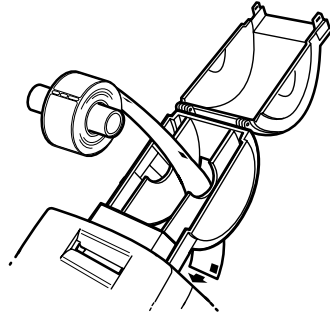
- 2 Lift the base of the clear plastic label cover and rotate it open.



- 3 Remove the spindle from the SLP and insert the label roll on the spindle.
- 4 Insert the labels and spindle into the SLP. If using an SLP 220, adjust the guides to fit the labels as shown below.



SLP 220

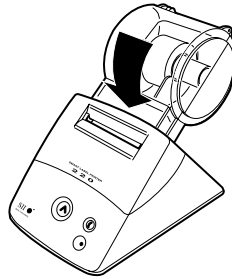


SLP 120

- 5 Insert the free end of the label roll, label side down, into the slot on the back of the printer. Push the label stock into the slot until you feel a slight resistance. Continue pushing gently. The SLP automatically feeds the labels through and aligns the end in the exit slot.

If the label end doesn't appear through the slot, press and release the form feed button to advance the labels.

- 6 Close the label cover.



Testing the Printer

A quick test lets you know your printer is operating properly and that the labels are loaded correctly. Here's how to proceed:

- 1 Press and hold the power button for 2 seconds to turn the printer off.
- 2 Press and hold the form feed button while you press and release the power button. If the test is successful, the SLP 120/220 will print a test label.



Installing the Smart Label Program

- 1 Start Windows.
- 2 Insert the Smart Label installation disk 1 or CD-ROM into the appropriate drive.
- 3 Click the *Start* button then point to *Settings* and choose *Control Panel*. The Control Panel window appears.
- 4 Double-click *Add/Remove Programs*. The Add/Remove Programs Properties dialog box appears.
- 5 Click the *Install* button. A dialog box appears asking you to insert the floppy disk.
- 6 Click the *Next* button. The drive and SETUP.EXE file are automatically selected and shown in the command line box.
- 7 Click the *Finish* button. Follow the directions on the screen to complete the installation of the program.

Starting the Program

If you installed a desktop or Start menu shortcut during installation, double-click the shortcut icon.

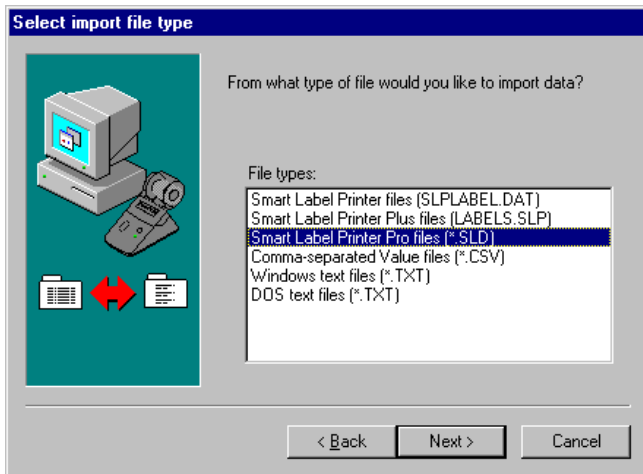
To use the Programs menu

Click the *Start* button, point to *Programs* then *Smart Label Printer* and choose the *Smart Label* program.

Updating a Previous Version

Before you can use labels that were saved from a previous Smart Label Printer software version, you must first import them into Smart Label program. The labels import with the same categories as the previous version. Address labels are automatically entered into the Contact Information fields.

- 1 Select the library that you want to import the files into. Initially the default library (LABELS.SLL) is open. To import into a different library, follow the directions in the on-line help.
- 2 Choose *Library* then *Import from file* from the Label menu. The Import File Wizard appears. Click the *Next* button.
- 3 Select the previous Smart Label Printer type from the list and click the *Next* button.



- 4 Follow the directions on the screen to select the label file and the labels within the file that you want to import.

The labels import into the previously assigned categories.

Changing the COM Port

The COM port connection for the SLP is automatically detected and selected during installation. If you change the SLP to a different COM port after installation, you will need to change the setting in the Smart Label program.

- 1 Choose *Printer setup* from the Label menu.
- 2 Select the new COM port in the Printer Setup dialog box and click *OK*.

If you have trouble using the new COM port, check the on-line help.

Using the Toolbar

The toolbar buttons provide quick access to commonly used features. Simply click a button to initiate the action. The name of the button appears when you position the cursor over it.

Basic Function Buttons



New Label Opens a new label.



Open Label Opens a dialog box where you select the label that you want to open.

Note... To locate a label by searching for words within a label, choose *Find* from the Label menu.



Save Label Saves the active label. The first time a label is saved a dialog box appears where you assign a label name and select a category.



Print Label Prints one copy of the active label. Use File menu commands to print multiple copies, saved labels, and files such as mailing lists.



Text Capture This button appears in the Notification area of the Windows Taskbar. It is used to SmartCopy or SmartCapture address text from other programs.

Smart Label Icons



Clicking one of the Smart Label Icons immediately changes the label format to the format assigned to that icon. Initially the Smart Label Icons are assigned the following formats and icons.

- Address label with U.S. POSTNET code
- Shipping label with return address
- General purpose label
- File folder label
- Invitation mailer label
- 3-1/2" backup disk label
- Name badge label

The Smart Label Icons can be customized to suit your specific needs.

Object Buttons

Select and add objects to the label. To open the Properties dialog box, click the right mouse button and select *Properties* or choose *Properties* from the Object menu.



Select

This button is used to select objects and text. To select objects, click the object. To select text, click and drag across text.



Add Smart Text

Since a label can only have one Smart Text object, this button is only available when the initial Smart Text object has been deleted. Click this button and drag in the label to add the Smart Text object. Type text into the object.



Add Picture

Click this button and drag in the label to add a Picture object. Select the picture source from the dialog box that appears.



Add Format Text

Click this button and drag in the label to add a Format Text object. Type text into the object. To utilize text from the Contact Information dialog box, choose *Insert Field* from the Edit menu and select the fields in the order that you want them inserted. Type any punctuation, text or spacing that you want to use between the fields.



Add Bar Code

Click this button and drag in the label to add a Bar Code object. Type the bar code number into the dialog box that appears.



Add Return Address

Click this button and drag in the label to add a Return Address object. Select the return address from the dialog box that appears. Click *New* to enter a new address.



Add Frame

Click this button and drag in the label to add a Frame object. To change the border, click the right mouse button and choose *Change Frame* to open the Frame Properties dialog box.

Contact Information Button



Contact Information

Opens the Contact Information dialog box. Use the dialog box to:

- Verify the address fields that were automatically entered.
- Enter other information such as the phone number.
- Modify information.
- View information


Creating New Address Labels

The basic steps for preparing and printing address labels are described below. The on-line help describes how to print address labels using files created in other programs.

Step 1 Create a New Label



- 1 Click the *New Label* button to begin a new label.
- 2 Type the address
-Or-
Use SmartCopy or SmartCapture to copy address text from another program. See on-line Help for details.
- 3 To customize the label, click a Smart Label Icon.
See “Changing the Label Type” later in this chapter if you want to use a different label type.
- 4 To add reference information such as phone numbers:

Click  and make the desired entries.

Step 2 Print the Label



Click the *Print* button to print the label.

Step 3 Save the Label



If you want to use the label in the future:

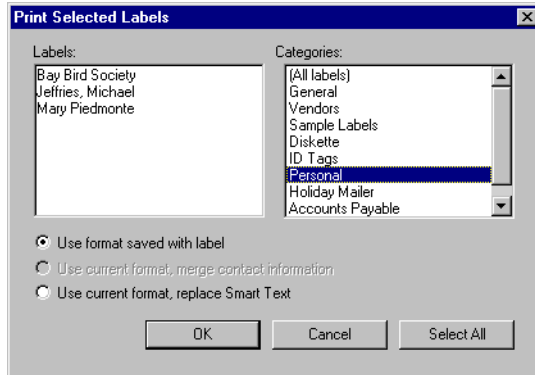
- 1 Click the *Save Label* button. The Save As dialog box appears. The first line of the address is shown in the Label Name box. Accept this name or type a different label name.
- 2 Click the *Swap Names* button to reverse the first and last name.
- 3 Select the category name that you want to use for the label and click *OK*.

Note... To modify the category names or create new categories, choose *Library* then *Define category names* from the Label menu.

Printing Saved Labels

After labels are saved, they can be reprinted as needed without opening them in the Smart Label program.

- 1 Choose *Print Selected Labels* from the File menu. The Print Selected dialog box appears.



- 2 Select one or more categories from which you will select labels for printing.
- 3 Select the desired format option.
- 4 Click *OK* to print the labels.

To pause, cancel or monitor printing, click the Smart Label Print Manager in the Windows Taskbar. Printing can also be suspended by pressing and releasing the power button.

Preparing Other Labels

The default Smart Label Icons provide sample formats for a variety of different labels. It is easy to customize these formats with your company logo, return address, etc. If you want to create a label type that isn't included, add the objects and modify the label as described below.

Using Smart Label Icons

Smart Label Icons format the active label with a different format.

- 1 Open a new label or a label that contains text that you want to use for a different type of label; e.g., the contents of an address label can be used to create a file folder label.
- 2 Click the Smart Label Icon for the type of label that you want to prepare. Click the asterisk button to select a format that hasn't been assigned to a Smart Label Icon.
- 3 If the Smart Text object is empty, type the text into the object.

Smart Text objects that contain fields automatically insert contact information from the active label.

Modifying the Objects

In addition to the Object menu commands, there are context menus that provide commands for modifying objects and the label settings.

- When the pointer is positioned on an object, clicking the right mouse button opens the context menu that contains commands for working with that object.
- When the pointer is positioned outside objects on the label, clicking the right mouse button opens a context menu that contains commands for printing the label, opening a new label, and opening the Label Properties dialog box.

Note... If you have difficulty selecting an object in the label, choose the object from the list at the bottom of the Object menu.

Changing the text and pictures

- Format Text objects. Select the text that you want to change and type the new text.
- Return Address objects. Choose *Change Return Address* from the context menu or choose *Properties* from the Object menu. Enter your return address into the dialog box that appears.

- Picture objects. Choose *Change Picture* from the context menu or choose *Properties* from the Object menu. Select the picture source from the dialog box that appears.

Changing object properties

- 1 Choose *Properties* from the object context menu or the Object menu.
- 2 Select the options that you want to change in the Properties dialog box.

Moving and resizing objects

- 1 Select the object. Handles appear around the object when it is selected.

To select Smart Text and Format Text objects, choose *Move/Resize* from the context menu.

- 2 To resize objects, drag the handles.
- 3 To move objects, position the pointer over the object until it changes to a crossed arrow. Drag the object to the desired position.

Deleting objects

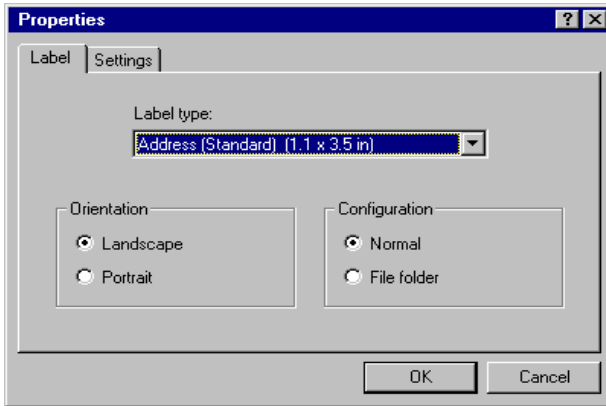
Choose *Delete* from the context menu or select the object and choose *Delete* from the Object menu.

Adding Objects

- 1 Click one of the add object buttons in the toolbar or choose *Add* and the object type from the Object menu.
- 2 Position the pointer where you want to insert the object and drag to draw the object.
- 3 If a dialog box appears, select the options or enter information for the object.

Changing the Label Type

To use a different label type, choose *Properties* from the label context menu or the Label menu and select the label type from the list. The new label type is reflected in the window when you click *OK*.



Saving the Format

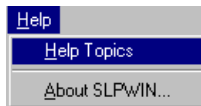
Changes to the label's format can be saved to an existing format or as a new format.

- 1 If you want to save changes to one of the default Smart Label Icons, position the pointer over the icon to display the format name.
- 2 Choose *Save format* from the Format menu. The Save Format wizard appears. Click the Next button to move through the wizard.
- 3 Enter a new format name or select an existing format from the list.
- 4 If saving a new format, select an icon to represent the format.
- 5 To assign a new format to a Smart Label Icon, select the icon that you want to replace.

Using On-Line Help

The on-line help provides detailed instructions for creating labels, customizing format, SmartCopy or SmartCapture, printing, and label database functions.

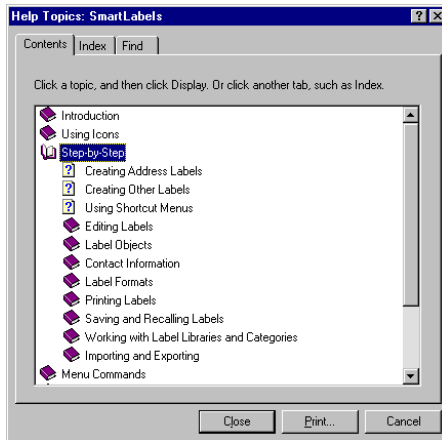
You access Help through the *Help Topics* command on the Help menu.



Use the Help Topics screen to jump to topics that tell you how to use the program, or to get quick access to other reference topics.

Contents Tab

The Contents tab lists topics grouped by subject. Double-click a book icon to view the contents for that subject. Double-click a topic with a question mark icon to view the help text.

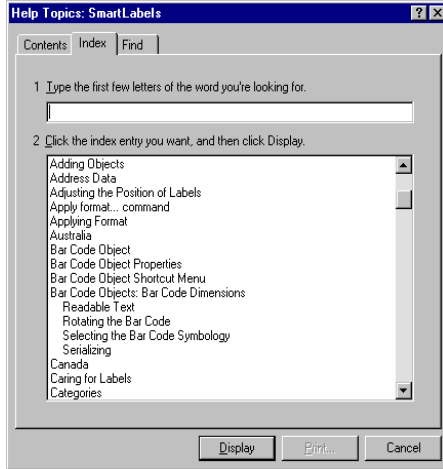


After viewing help text, click *Help Topics* to return to the Contents.

Note... If the topic contains green underlined text, click the green text to view help text for that topic.

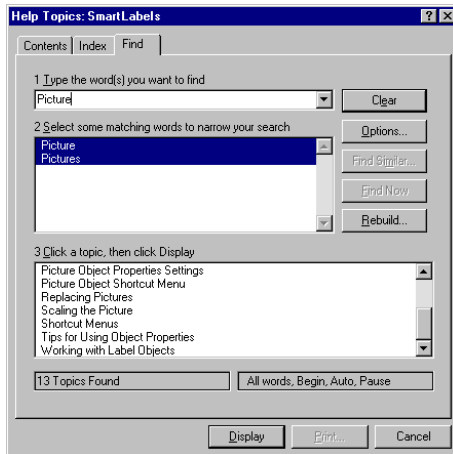
Index Tab

Click the Index tab to find specific topics in an alphabetical list. To quickly locate a topic, type the first few letters of the topic. Double-click the topic to view help text.



Find Tab

Click the Find tab to find all topics that contain a word or phrase. Type the word or phrase to list topics. Double-click a topic to view help text.



Chapter 3

Changing Labels and Printer Care

Overview 3-2

Caring for Your Printer 3-2

Off Line and On Line Mode 3-2

Changing a Label Roll 3-3

Adjusting the Position of Labels 3-4

Removing Stuck Labels 3-5

Overview

The SLP 120/220 uses advanced thermal print technology to provide crisp, high-contrast printing. There are no ribbons or cartridges to replace.

An important consideration... For best results we recommend the use of Seiko Instruments SmartLabels. Other brands may not be engineered to provide optimum, trouble-free results with your SLP; they may not work with your printer or they may damage it and void your warranty. Be sure to look for the Seiko Instruments SmartLabels logo when you buy labels.



Caring for Your Printer

Your SLP 120/220 is a high-precision device that's designed for trouble-free operation. Just follow these few precautions:

- *Important...* The SLP 120/220 is designed for use only with Seiko Instruments SmartLabels. Use of improper labels may damage the printer.
- Don't operate the printer in a dusty environment.
- Keep the printer out of direct sunlight.
- If you are printing more than one label at a time, guide the labels over the front of the label cover as they exit, making sure that they don't curl under the cover and loop through and into the feed slot.

Off Line and On Line Mode

Pressing and releasing the power button toggles the printer between off line and on line mode. An amber status light indicates that the printer is off line. There is no communication with the computer when the printer is off line.

This feature is a handy way to stop printing so you don't waste labels while you delete labels from the print queue.

Changing a Label Roll

This procedure describes how to remove and replace label rolls.

- You can load a different type of label at any time — you don't have to wait until all of the labels have been used.
- When you run out of labels, the green status light on the front of the SLP flashes. If printing is in process, a message appears telling you that the printer is out of labels.

Removing the Old Roll



CAUTION: DO NOT pull on the labels to remove them from the printer. This may cause labels to get stuck inside the printer.

- 1 Tear off any printed labels. If labels aren't torn off, they may get jammed when you perform step 2.
- 2 Press and hold the form feed button. The labels will reverse out of the SLP.

Loading the New Roll

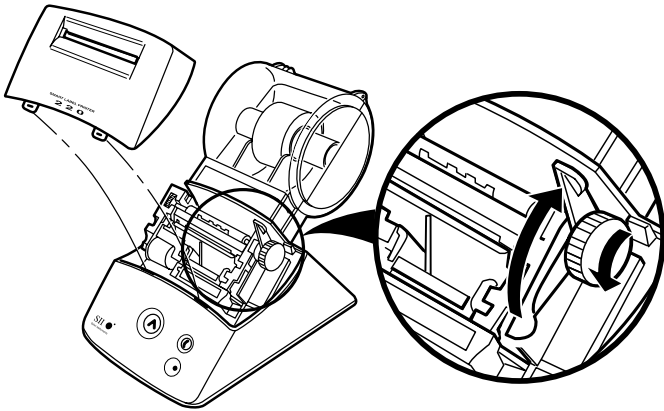
Prepare the new label roll and load the labels as described in Chapter 2.

Adjusting the Position of Labels

If you find the labels are advancing at an angle, it's easy to realign them. Follow these steps:

- 1 Remove the print engine cover by grasping it on the top and tilting it toward you.
- 2 Release the pressure on the label stock by moving the platen release lever toward the back of the SLP.

Remove the print engine cover



Release the platen lever
and rotate the platen knob

- 3 Realign the label stock so it is straight.
- 4 Return the platen release lever to the locked position.
- 5 Make sure the labels feed through the slot.
- 6 Insert the tabs on the lower edge of the print engine cover into the slots on the SLP and push the top edge forward until the cover snaps into place.

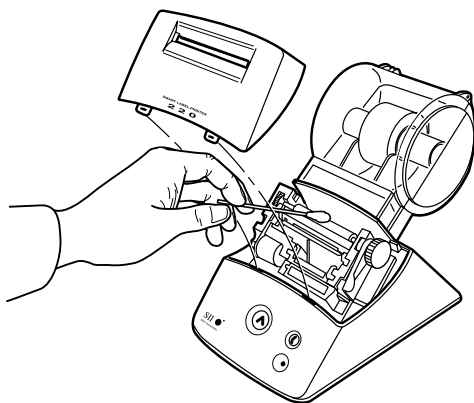
Removing Stuck Labels

If a label becomes stuck in your SLP, remove it as follows:

- 1 With a pair of scissors, cut the label stock between the label roll and the label slot at the back of the printer.
- 2 Remove the print engine cover by grasping it at the top and pulling the top toward you.
- 3 Release the pressure on the label stock by moving the platen release lever toward the rear of the printer.
- 4 Remove the stuck label by turning the platen knob counterclockwise.
- 5 If the label — or pieces of the label — stick to the platen, use a small amount of isopropyl rubbing alcohol on a cotton swab to dissolve the adhesive on the back of the label.



CAUTION: DO NOT touch the print engine. It may be hot.



- 6 Once you have removed any remaining pieces of label, return the platen release lever to the locked position.
- 7 Insert the tabs on the lower edge of the print engine cover into the slots on the SLP and push the top edge forward until the cover snaps into place.

Appendix A

Specifications

Smart Label Printer 120/220 Specifications A-2

Status Light Indicators A-3

IBM-compatible Connector Pin Assignments A-4

Smart Label Printer 120/220 Specifications

The SLP is a compact printing device ideally suited for label printing applications. There are no built-in fonts and any text must be converted to a bitmap image by a host computer or device for printing on the SLP.

Developer information can be found on our <http://www.seikosmart.com> web site.

Printer

Technology	Direct thermal	
Resolution	203 dpi (8 dots/mm)	
Max. Paper Width	Model 120	1.1 in. (28mm)
	Model 220	2.28 in. (58mm)
Max. Printable Width	Model 120	0.94 in. (24mm)
	Model 220	1.89 in. (48mm)
Print Speed	3.5 seconds average speed, standard address label	
Interface	RS-232	
Power	Universal AC adapter Input: AC 90-240V, 50/60 Hz Output: DC12V 4A (max.)	
Dimensions	4.92 (W) x 7.68 (D) x 6.5 (H) in. 125 (W) x 195 (D) x 165 (H) mm	
Weight	About 1.15 lbs. (520 grams)	

Environment

Temperature	Operating:	15 to 35°C (59 to 95°F)
	Storage:	-20 to 60°C (-4 to 140°F)
Humidity	Operating:	30% RH to 80% RH (non-condensing)
	Storage:	30% RH to 90% RH (non-condensing)

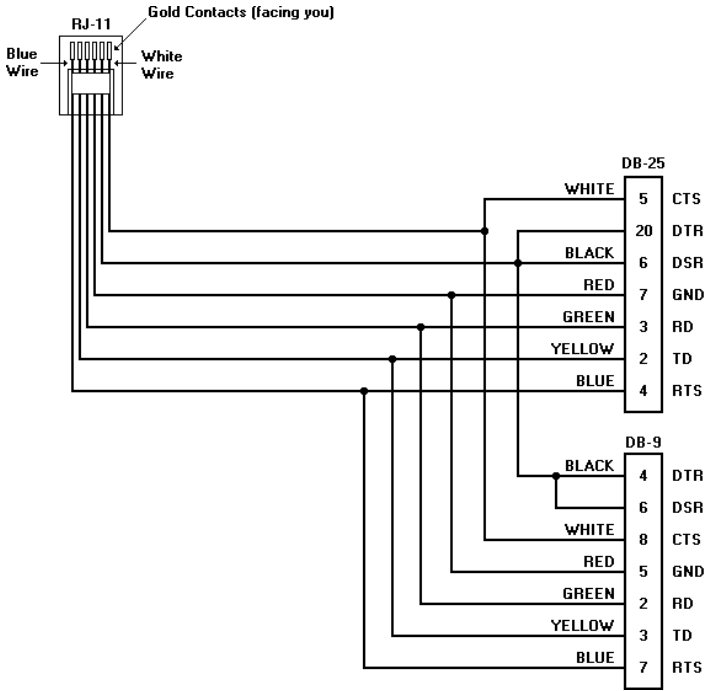
Status Light Indicators

LED Indicator	State
Off	Power off/Stand-by
Steady Green	On-line
Steady Amber	Off-line
Blinking Green 1*	No labels
Blinking Green 2*	Print head up
Blinking Amber 1*	Label jam
Blinking Amber 2*	Buffer overflow
Blinking Red 1*	Temperature error
Blinking Red 2*	Voltage error
Blinking Red 3*	Print head error

* The number refers to the number of blinks.

IBM-compatible Connector Pin Assignments

The following chart shows the IBM-compatible connector pin assignments for the SLP 120/220.



Commonly Asked Questions and Answers

Q *Will my labels fade over time?*

A Labels use a thermal-sensitive paper to create the image. Heat applied to the paper causes a chemical reaction to generate black dots at the points where heat was applied. This technique avoids using messy inks and ribbons. Because the paper is heat-sensitive, it is possible for a label to darken if exposed to high heat or very bright light for an extended period of time. It is also possible for certain plasticizers in some plastic binders to cause a chemical reaction which results in the image fading over time. Placing another adhesive (perhaps another label) between the vinyl surface and the label may help minimize this type of fading.

In general, labels will last for years if they aren't subjected to the above conditions. The label material is much more stable than Fax paper due to the special formulation and coatings used by Seiko Instruments.

Q *How many labels can I save?*

A The number of labels you can save is limited only by the amount of disk space in your computer.

Q *I just bought an SLP 120/220, but there is no place to plug it into the back of my computer. What do I do?*

A You need to install another serial port into your system. The SLP connects to COM1, COM2, COM3, or COM4. You can use a switch box, but you may find it much more convenient—and less expensive—to have a serial board installed.

Q *The only available place to plug the SLP cable into the back of my computer is the opposite type. Should I get a gender changer?*

A This is likely to be your parallel port connector. The SLP requires a serial port, and cannot be connected to a parallel port without a special adapter available separately from Seiko Instruments. See "Replacement Parts and Accessories" in Appendix D for ordering information.

Q *Can I book my SLP into my serial port and then book a mouse or modem into the other connection at the end of the SLP cable?*

A No. Only one of the two connectors on the SLP cable can be used. The cable was designed so that it could be used on either a 9-pin serial port *or* a 25-pin serial port connector.

The SLP is a serial device. Optimum installation mandates the use of a dedicated serial port. This means that nothing else in the computer is expected to use the same COM port or shared IRQ, for which the SLP is configured.

Unfortunately, if you install a new SLP on a serial port that has never been used before, that's when you may learn of a malfunction with the serial port. If you can't determine the cause of the problem, consult a qualified technician.

Another possible problem is that a serial device (such as a mouse, modem, tape backup card, scanner, home security system, network card, certain video card attachments, etc.) was previously installed on the computer without a check being made about which serial interrupts this new device uses. The new device might have been configured to use the same interrupts as the serial ports, causing a conflict. The solution for this problem is to have the new device board reconfigured to use only those interrupts that are available. A qualified technician may be needed to perform this task.

Technical Support and Service

Technical Support is provided to assist with problems in the setup or use of your SLP. To assist us in best handling your support requirements, please review the following section.

Before You Call . . .

- Check the Readme file that is included with the Smart Label program. This file contains the most up-to-date information about the Smart Label program.
- Refer to the Troubleshooting topic in the on-line help.
- Review the commonly asked questions in Appendix B.
- If you think a repair is necessary, follow the instructions in the following “Service for your Smart Products” section.

If you are not sure if your SLP needs repair, or if you have other technical support questions, please refer to the back cover of this guide for SLP Technical Support phone numbers.

Service for Your Smart Products

How to get your Smart Label Printer repaired

In the unlikely event that your Smart Label Printer should require repair, please copy the Return Information Card at the end of this appendix and include it with your printer when you send it to our authorized repair center.

Returning your Smart Label Printer for repair is as easy as 1-2-3!

- 1 Complete the Return Information Card.
- 2 Pack the product in a protective carton (like the original box). Include the Return Information Card in the box.
- 3 Ship the package to the repair center.

Repair Policies:

- All products are repaired to original factory specifications.
- All out-of-warranty repairs carry a 30 day warranty.
- Products are usually repaired within 48 working hours of receipt by the repair center.
- All products being returned for repair should be insured for full replacement value.

Smart Label Printer Repair Center Locations in North America and Europe

North America

United States

Seiko Instruments
Department ARC
25108 Milton Thompson Rd.
Lees Summit, MO 64086

Canada

GEAC Canada Ltd
45 Mcintosh Drive
Markham, Ont. L3R 8C7
Canada

Europe

Netherlands

Compac b.v.
Postbus 111
Hilversum
Nederland

Switzerland

Lab Plus AG
Kirchacherstrasse 9
Postfach 23
CH-8608 Bubikon
Switzerland

Sweden

Memstore AB
Truckvägen 16
Box 2027
S-194 02 Upplands Väsby
Sweden

Finland

Paricad OY
Olarinluoma 16
FIN-02200 ESPOO
FINLAND

Germany

Papyrus Software-Entwicklung Gmbh
Spaldingstraße 74
D-20097 Hamburg
Germany

England, Scotland, Ireland

SEIKO Precision U.K.
S.C. House Vanwall Road
Maidenhead, Berkshire SL6 4UW
United Kingdom

Seiko U.K. Ltd.
Hattori House Vanwall Road
Madinhead, Berkshire SL6 4UW
United Kingdom

All other European Countries

Logistix Ireland, Ltd.
Attention: Seiko Repairs
Swords Business Park
Seaton Road
Swords, c/o Dublin
Rep of Ireland

Return Information Card

Please place this card in with product being returned for service:

1. Select the appropriate box:

- Warranty Repair

No charge. Must include dated proof of purchase.

- Out of Warranty Repair

Payment: Check enclosed Credit Card

(circle one) VISA MasterCard AMEX (USA only)

Cardmember's Name (as it is printed on the credit card):

Card Number: _____

Expiration Date: _____

Signature: _____

2. Where should we send the repaired printer:

Company:

Name:

Address:

City, State, Zip:

Phone: (____) _____ - _____

Appendix D

Ordering Labels and Parts

SmartLabels for Smart Label Printers

SLP-2RL	Address Labels
SLP-M2RL*	1-1/8" x 3-1/2" (28mm x 89mm), 2 rolls/box, 130 labels/roll
SLP-1RLCL**	Clear Address Labels 1 roll/box, 130 labels/roll
SLP-M2RLCL*	1-1/8" x 3-1/2" (28mm x 89mm), 2 rolls/box, 130 labels/roll

Colored Labels

SLP-CMB1	Combo Pack 1 roll each of white, clear, yellow, and blue file folder
SLP-4AST	Assorted Colored Labels 1 roll each of yellow, blue, green, and pink 1-1/8" x 3-1/2", (28mm x 89mm), 130 labels/roll

Custom Sized Labels

SLP-MRL	1x2 Multipurpose Labels 1-1/8" x 2" (28mm x 51mm), 2 rolls/box, 220 labels/roll
SLP-VSL	VHS Spine Labels 3/4" x 5-13/16" (19mm x 147mm), 2 rolls/box, 75 labels/roll
SLP-27210	8mm Tape Spine Labels 3/4" x 2-13/16" (9mm x 71mm), 1 roll/box, 150 labels/roll

Additional SmartLabels for the SLP 220

SLP-2RLH	High Capacity Address Labels
SLP-M2RLH*	1-1/8" x 3-1/2" (28mm x 89mm), 2 rolls/box, 260 labels/roll
SLP-SRL	Shipping Labels
SLP-MSRL*	2 -1/8" x 4" (54mm x 101mm), 1 roll/box, 220 labels/roll
SLP-2RLE	Large Address Labels
SLP-M2RLE*	1-1/2" x 3-1/2" (36mm x 89mm), 2 rolls/box, 260 labels/roll
SLP-DRL	3.5 Diskette Labels
	2-1/8" x 2-3/4" (54mm x 71mm), 1 roll/box, 320 labels/roll
SLP-VTL	VHS Face Labels
	1-13/16" x 3-1/16" (46mm x 78mm), 1 roll/box, 150 labels/roll
SLP-35L	35mm Slide Labels
	7/16" x 1-1/2" (11mm x 38mm), 1 roll/box, 300 labels/roll
SLP-NR	Red Name Badge Labels
	2-1/8" x 2-3/4" (54mm x 70mm), 1 roll/box, 160 labels/roll
SLP-NB	Blue Name Badge Labels
	2-1/8" x 2-3/4" (54mm x 70mm), 1 roll/box, 160 labels/roll

* Multilanguage packaging (German, French, Spanish)

** Available in North America only

Call us at 1-800-688-0817 (U.S. and Canada) or 0845-309-8028 (United Kingdom) for additional information or to place an order.

Visit our WEB site at <http://www.seikosmart.com>

Specifications subject to change.

Replacement Parts and Accessories

The replacement parts listed below are available from Seiko Instruments. Call us at 1-800-688-0817 (U.S. and Canada) or 0845-309-8028 (United Kingdom) for price and order information.

Part Number	Description
Body/Chassis Parts	
32-81013-01	120 Label Roll Cover
32-81014-01	120 Label Spindle
32-81015-01	120 Print Engine Cover
32-82013-01	220 Label Roll Cover
32-82014-01	220 Label Spindle
32-82015-01	220 Print Engine Cover
Cables	
34-83013-01	SLP 120/220 Power Cord, U.S. version
34-83014-10	SLP 120/220 Power Cord, Euro version
34-83015-50	SLP 120/220 Power Cord, UK version
34-83016-70	SLP 120/220 Power Cord, Australia version
34-83017-60	SLP 120/220 Power Cord, Japan version
34-83018-01	SLP 120/220 Serial Cable, PC
34-83020-01	Universal AC Adapter
Accessories	
SLP-CNVTR	Smart Label Printer Serial-to-Parallel Converter
SLP-SMRT	Smart Label Printer Sharing Switch

Index

A

- Accessories
 - ordering, D-3
- Address labels, 2-16

B

- Bar code objects
 - adding, 2-15

C

- Categories
 - creating or renaming, 2-16
 - selecting, 2-16
- Changing a label roll, 3-3
- Changing label format, 2-14
- Changing label type, 2-20
- COM port
 - changing, 2-12
 - connecting, 2-6
- Common questions, B-2
- Contact information dialog box, 2-15
- Context menus, 2-18, 2-19, 2-20
- Creating new labels, 2-13, 2-16, 2-17

D

- Developer information, A-2

F

- Features, 1-3
- Find feature, 1-3
- Format
 - applying, 2-14, 2-18
 - saving, 2-20
- Format Text objects, 2-15
 - editing text, 2-18
 - inserting fields, 2-15
 - moving and resizing, 2-19
- Frame objects
 - adding, 2-15

H

- Help, 2-21

I

- Importing
 - also see on-line Help, 2-11
 - labels from previous versions, 2-11
- Installation
 - SLP 120/220, 2-4
 - Smart Label program, 2-10
 - updating a previous version, 2-11

L

- Label properties, 2-20
- Labels
 - caring for, 2-3
 - recommended, 2-3, 3-2
- Libraries
 - also see on-line Help, 2-11
 - selecting, 2-11
- Loading labels, 2-7, 3-3
 - preparing a new roll, 2-7
 - removing the old roll, 3-3

M

- Multiple users
 - also see on-line Help, 1-3

O

- Objects
 - adding, 2-14, 2-19
 - bar codes, 2-15
 - deleting, 2-19
 - Format Text, 2-15, 2-18
 - frame, 2-15
 - modifying, 2-18
 - moving and resizing, 2-19
 - picture, 2-14, 2-19
 - properties, 2-18, 2-19
 - return address, 2-15, 2-18
 - selecting, 2-14, 2-18
 - Smart Text, 2-14
- Other labels, 2-17

P

Package contents, 2-4

Picture objects

- adding, 2-14
- changing picture, 2-19
- properties, 2-19

Printing labels

- out of labels, 3-3
- print button, 2-13
- print selected labels, 2-17
- SLP Print Manager, 2-17
- stop printing, 2-17, 3-2

Properties

- label, 2-20
- objects, 2-18, 2-19

R

Repair center locations, C-4

Replacement parts

- ordering, D-3

Return address objects

- adding, 2-15
- changing, 2-18
- entering address, 2-18
- properties, 2-18

S

Saved labels

- finding, 2-13
- importing previous version, 2-11
- printing, 2-17
- recalling, 2-13

Saving format, 2-20

Saving labels, 2-13, 2-16

SLP

- adjusting labels, 3-4
- caring for, 3-2
- connector pin assignments, A-4
- form feed button, 2-5
- off-line mode, 3-2
- on-line mode, 3-2
- power button, 2-5, 3-2

- removing stuck labels, 3-5
- status light, 2-5, 2-6, 2-7, 3-2, 3-3

testing printer, 2-9

thermal print engine, 3-2

SLP Print Manager, 2-17

Smart Label Icons, 2-14

- customizing, 2-20
- using, 2-18

Smart Label program

- installing, 2-10
- starting, 2-11

Smart Text objects

- adding, 2-14
- moving and resizing, 2-19

SmartCapture, 2-16

- also see on-line Help, 2-13

SmartCopy, 2-13, 2-16

SmartLabels, 2-3, 3-2

- Ordering, D-2

Specifications, A-2

System requirements, 2-2

T

Text Capture button

- also see on-line Help, 2-13

Toolbar buttons

- add bar code object, 2-15
- add Format Text object, 2-15
- add frame object, 2-15
- add picture object, 2-14
- add return address object, 2-15
- add Smart Text object, 2-14
- contact information, 2-15
- new label, 2-13, 2-16
- open label, 2-13
- print label, 2-13
- save label, 2-13, 2-16
- select, 2-14

W

Windows 95 and 98, 2-2

Windows NT 4.0, 2-2

Warranty Information

Limited Warranty on Hardware

One (1) Year Limited Warranty

Seiko Instruments USA Inc. warrants this product against defects in materials and workmanship for a period of one (1) year from the date of original retail purchase (proof of purchase required). If Seiko Instruments USA Inc. receives notice of such defects during the warranty period, Seiko Instruments USA Inc. will either, at its option, repair or replace products which prove to be defective.

Exclusions

The above warranty shall not apply to defects resulting from: improper or inadequate maintenance by customer; customer-supplied software or interfacing; unauthorized modifications or misuse; operation outside of the environmental specifications for the product; or improper site operation and maintenance.

Obtaining Warranty Service

To obtain warranty service, products must be returned to a service facility designated by Seiko Instruments USA Inc. See "Service for your Smart Products" at the back of this user guide for details.

Customer shall prepay shipping charges for products returned to Seiko for warranty service and Seiko Instruments USA Inc. shall pay for return of the products to customer. However, customer shall pay all shipping charges, duties and taxes for products returned to Seiko Instruments USA Inc. from another country.

Warranty Limitations

Seiko Instruments USA Inc. makes no other warranty, either expressed or implied, with respect to this product. Seiko Instruments USA Inc. specifically disclaims the implied warranties of merchantability and fitness for a particular purpose. Some states or provinces do not allow limitations on the duration of an implied warranty, so the above limitations or exclusion may not apply to you. However, an implied warranty of merchantability or fitness is limited to the one year duration of this written warranty. This warranty gives you specific legal rights, and you may also have other rights which may vary from state to state, or province to province.

Exclusive Remedies

The remedies provided herein are customers sole and exclusive remedies. In no event shall Seiko Instruments USA Inc. be liable for any direct, indirect, special, incidental or consequential damages, whether based on contract, tort, or any other legal theory. Some states or provinces do not allow the exclusion or limitations of incidental or consequential damages, so the above limitation or exclusion may not apply to you.

Limited Warranty on Media

If you discover physical defects in the guide distributed with the Smart Label Printer, or on the media on which software is distributed, Seiko Instruments USA Inc. will replace the guide or media at no charge to you, provided that you return the items to be replaced during the 90-day period following your purchase of the Smart Label Printer or software.

All implied warranties on the media or guide, including implied warranties of merchantability and fitness for a particular purpose, are limited in duration to ninety (90) days from the date of the original retail purchase of the product.

Even though Seiko Instruments USA Inc. has tested the software and reviewed the documentation, Seiko Instruments USA Inc. makes no warranty or representation, either express or implied, with respect to software, its quality, performance, merchantability, or fitness for a particular purpose. As a result, the software is sold as is, and you the purchaser are assuming the entire risk as to its quality and performance. In no event will Seiko Instruments USA Inc. be liable for direct, indirect, special, incidental, or consequential damages resulting from any defect in the software or its documentation, even if advised of the possibility of such damages. In particular, Seiko Instruments USA Inc. shall have no liability for any programs or data stored in or used with the Smart Label Printer, including the costs of recovering such programs or data. The warranty and remedies set forth above are exclusive and in lieu of all others, oral or written, express or implied.

Some states do not allow the exclusion or limitation of implied warranties or liability for incidental or consequential damages, so the above limitation or exclusion may not apply to you. This warranty gives you specific legal rights, and you may also have other rights which vary from state to state.

Copy Protection

The Smart Label Printer program disks are not copy-protected. You may make backup copies for your own use, but this doesn't mean you can make unlimited copies. The program is protected by the copyright laws that pertain to computer software. It is illegal to make copies of the disks without written permission from Seiko Instruments USA Inc. In particular, it is illegal to give a copy of the program or your spare set of disks to another person.

SmartLabels are available from your local Seiko Instruments dealer or they may be ordered from Seiko Instruments. For information call:
1-800-688-0817 (USA and Canada)
0845-309-8028 (United Kingdom)

For best results, we recommend the use of
Seiko Instruments SmartLabels.

Other brands may not be engineered to provide optimum, trouble-free results with your Smart Label Printer; they may not work with your printer or they may damage it and void the warranty.



Be sure to look for the Seiko Instruments SmartLabel logo whenever you buy labels. SmartLabels are available in a variety of sizes and colors so you can label just about everything!

Technical Support

North America	1-800-757-1011 (6:00am-8:00pm Pacific)
Germany	+49-40-2380-8916
U.K.	+44-17-157-15117
France	0800-901629 (in France only)

SII ●
Seiko Instruments

1130 Ringwood Court
San Jose, CA 95131 USA
www.seikosmart.com