

REVIEW LABEL PRINTERS

## SEIKO Smart Label Printer 200

RATING ★★★★★ PRICE £152 inc VAT

## Smart Label Printer 240

RATING ★★★★★ PRICE £182 inc VAT

SUPPLIER [www.dabs.com/uk](http://www.dabs.com/uk)

DETAILS [www.siibusinessproducts.com/eu/english/products/printers.html](http://www.siibusinessproducts.com/eu/english/products/printers.html)

SII Seiko Instruments Inc.

SmartTools: Technology for Business and Home/Office

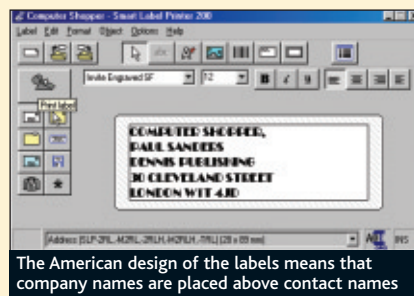
the USA in mind. For example, the mailing label template includes a barcode for the zip code. In fact the software will convert UK postcodes into valid barcodes but as their use is still very restricted this may not be of much interest.

Although creating one-off mailing labels is an obvious task for this printer it is only one of many. There's a template for labelling file folders in which the same text is printed twice, with the upper text upside down. When you fold it over you can read the label from either side. Other templates are for diskette labels and name badges. When you print these you will be prompted to change the label size. If you ignore the message the label will print anyway, but you'll need to trim the result.

A wide range of labels is available, including VHS face and spine labels, 35mm slide labels and colour-coded file folder labels. Red and blue name badge labels can be purchased and address labels are available not only in white but also clear (transparent) and assorted pastel shades.

You can convert text you type into a barcode on any label, the default format for which is Code 39. Right-clicking any object allows you to edit it and in the case of barcodes lets you choose a different format from a list of seven options including EAN-13, a standard commonly used in the UK.

The American design of the labels may prove annoying to British users. For example, company names are above contact names in addresses. If you copy a UK address the Contact Information extracted is assigned to the wrong fields. Even so, the convenience of this simple system outweighs these niggles.



The American design of the labels means that company names are placed above contact names

Next you use either the USB or serial cable to link up to your PC. During installation you can add the SmartCapture and SmartCopy facility to the system tray. SmartCapture, which automatically detects addresses, works only with US zip codes, but SmartCopy makes it easy to transfer an address typed in applications such as Word or Outlook straight to Smart Label, allowing you simply to highlight it and click on the icon in the system tray.

The program uses word wrap and automatically offers shrink-to-fit, ensuring that everything fits on your label, whatever the size. In many cases you'll find that having inserted an address, you can go straight to printing it and you're likely to be happy with the result. Alternatively you can use standard formatting tools and fonts and also insert logos or other image files. You can also apply one of the supplied template designs so, for example, you can convert an address into an invitation.

The program's templates are designed with

**PROS & CONS**

- ✓ Easy to use; extensive range of labels
- ✗ Adherence to US conventions causes small problems

There are three models in the Smart Label Printer (SLP) range, all of which use the same software and offer the same resolution of 203 dots per inch. The cheapest model at £88 including VAT is the SLP 100, but this has a printing width of only 2.5cm. The SLP 200 and SLP 240 reviewed here both print on a 5cm tape, but at different speeds: eight seconds per label for the SLP 200 and just three seconds per label for the SLP 240.

The Quick Start Guide provided with the Smart Label Printers makes preparing to use them easy. First you connect the printer to the power supply and then you load the roll of labels. This is remarkably simple. All you do is place a roll on the spindle, put the spindle on its holder and pull the end of the roll to the slot at the back of the printer. Then the electronics take over and position the tape automatically.

Model	Smart Label Printer 100	Smart Label Printer 200	Smart Label Printer 240
Label Width	1 1/8" (1 inch model)	2 1/8" (2 inch model)	2 1/8" 2 inch high speed model)
Resolution	203 DPI	203 DPI	203 DPI
Description	Sharp text and high quality images. USB and serial connections.	Sharp text and high quality images. USB and serial connections.	Sharp text and high quality images. USB and serial connections.
Uses	Perfect for envelopes, file folders, bar codes and more.	Same and Smart Label Printer 100, plus packages, diskettes, ZIP™ disks, name badges, 35mm slides, Rolodex® cards and more.	Same and Smart Label Printer 100 and 200 but with super fast printing.
Print Speed	Approximately 8 seconds per label	Approximately 8 seconds per label	Approximately 3 seconds per label



**REQUIREMENTS**  
Windows 98/Me/XP; 4MB RAM; 8MB disk space