

InkLink™ and Windows® Human Interface Devices Drivers

Under the Windows operating system the InkLink handwriting system is defined as a Human Interface Device (HID). When installing InkLink for the first time, your Windows system may prompt you for the installation of the HID drivers. This prompt is observed primarily in older Windows 98 systems. These instructions show you how to install the HID drivers.

Before you start, you will need an original Windows 98 installation CD. If you do not have the original Windows 98 installation CD, then download the Human Interface Device drivers (included in a file named InkLinkHID98.zip, which is posted at:

<http://www.seikosmart.com/support/inklinksoft.html>

Installation:

1. If you have a Windows 98 CD simply insert the CD into you CDROM drive and click “Continue” when prompted to install the HID drivers, and Windows will automatically install the necessary drivers. However, if you do not have the Windows 98 CD available simply proceed to step 2 and follow the instructions.
2. Before you start, make sure you have downloaded and unzipped the drivers from InkLinkUSB98.zip posted at the url above, and copied them to a temporary directory. (example: C:\Temp). This directory should now contain 6 files:

- HID.DLL
- hidclass.sys
- hidparse.sys
- hidusb.sys
- pcnt170a
- license

3. Connect the USB cable to the InkLink Handwriting System, and the other end to one of your PC's USB ports. Windows will display the “New Hardware Found” window, then the following dialog:

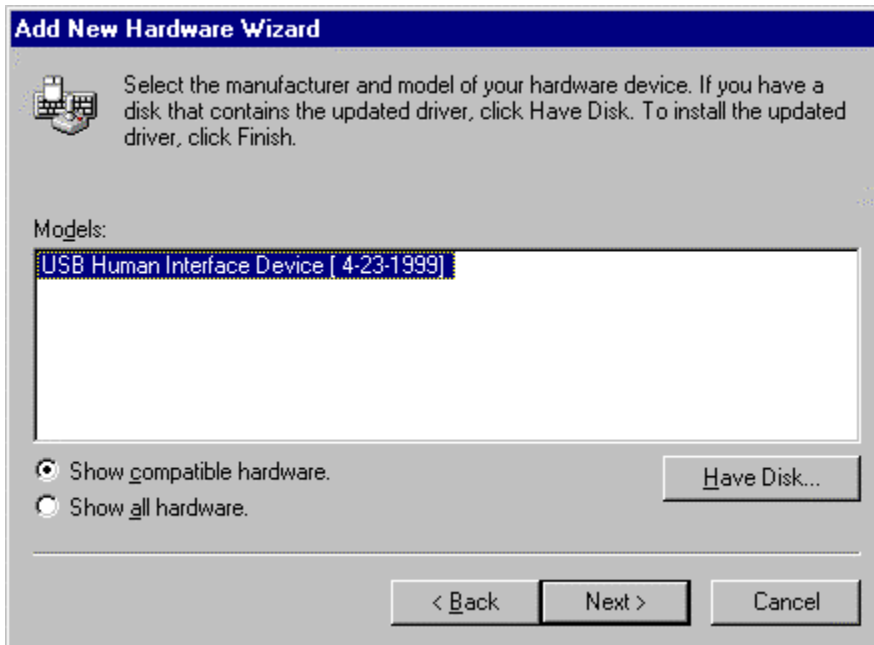


Click “Next” and continue.

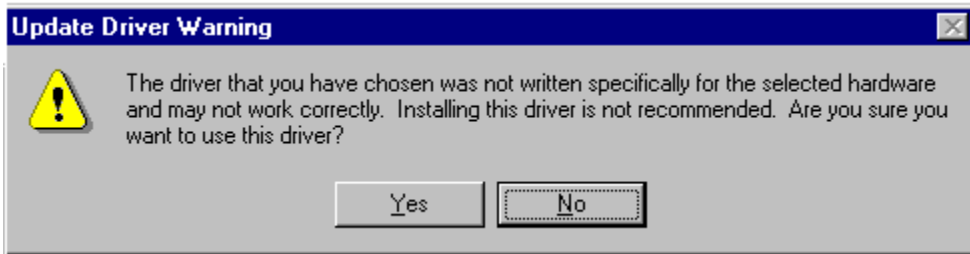
4. In the next dialogue, choose “Display a list of all the drivers in a specific location, so you can select the driver you want.” Click “Next” and continue.



5. You will see the following dialog. Click “Have Disk” and follow the prompt to specify the location of the directory, in which you have copied the downloaded files.



6. When you have specified the location, Windows will install the drivers found. Click “Next” to continue. When you see the following “Update Driver Warning” dialog, click “Yes” and continue with the installation.



If you encounter problems installing the Human Interface Device (HID) drivers, or have problems completing the above instructions, please contact our Technical Support organization at: 800-757-1011 or email us at: us-support@seikosmart.com